



### 3Com CCSO Escalation

Building 2, Ballycoolin Business Park  
Dublin 15  
Ireland

---

C C S O E s c a l a t i o n

---

## How to upgrade the revision code of a Courier I Modem

You have downloaded from the 3Com web site of your country a compressed file for your Courier I Modem ( ie020405.zip for the external version and im020405.zip for the internal one ). To upgrade your revision, first unzip the file in a temporary directory e.g. C:\USR ( if you don't have Winzip, you can download it from <http://www.winzip.com> ). Then open explorer and click on the temporary directory on the left side. Then on the right side, do a right click on the go.bat or goint.bat file ( it depends of your version ) and select edit. It opens Notepad.

For the go.bat file, you have this line : **PCSDL -p%1 -r115200 -vNA2.4.5 -vSD2.4.5 -nSDie -nNAie**. You must change **-p%1** by **-p1** if your modem is on port com 1 and **-p2** for port com 2

For an external Courier I Modem on port com 2, you must have this line :

**PCSDL -p2 -r115200 -vNA2.4.5 -vSD2.4.5 -nSDie -nNAie**

Do the same thing with the goint.bat file. For an internal Courier I Modem on port com 3, you have (for a com port with a specific IRQ, add **-ix**, x for the number of this IRQ):

**PCSDL -p3 -r57600 -vNA2.4.5 -vSD2.4.5 -nSDim -nNAim -b**

To validate the upgrade, don't forget to type this strings in terminal mode and to press « Enter » after each line :

**AT&F1&C1&D2E1V1Q0<CR>**

**ATS0=0S14=0S53=0S67=12S68=16S69=0<CR>**

**AT\*W=4A<CR>**

**AT\*P1=<CR>**

**AT\*P2=<CR>**

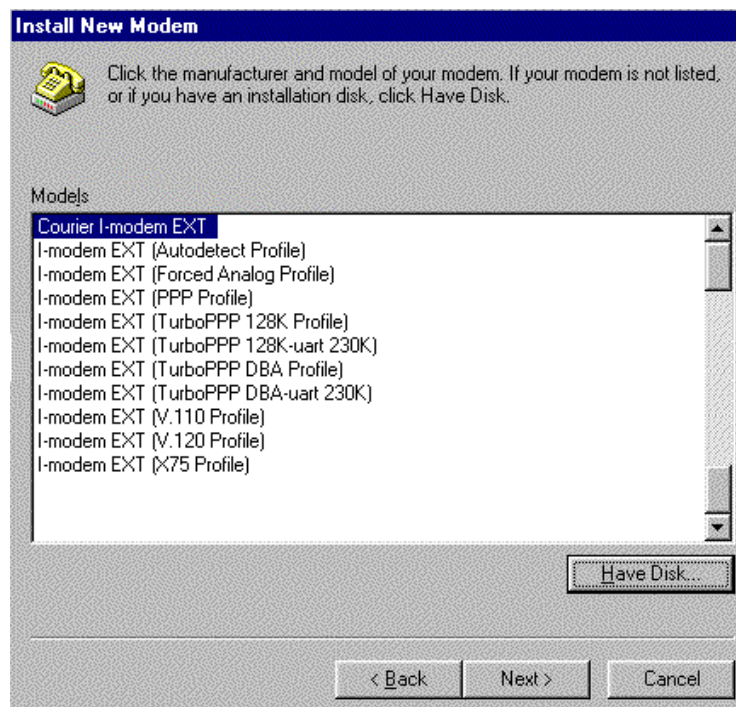
**AT\*P=0<CR>**

**AT\*C4\*R4\*V2=0<CR>**

**AT&W<CR>**

**ATZ!<CR>**

After the upgrade, reboot your computer. The Courier I will be redetected. Windows 95/98 will ask you for the drivers. Insert a floppy where you have copied the file named mdm3cmim.inf. Windows will show on the screen the drivers found (see below)



You have a driver for each protocol. Choose one of them and click on Next and then on Finish. After if you want to add an extra driver for another protocol, you have to go in the modem properties (Start / Settings / Control Panel / Modems) and click on Add then tick Don't detect my modem. Next choose Have Disk , insert your floppy and select your driver. Do this each time you want to add a driver.